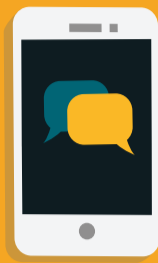


# FLOOD WARNINGS: WHAT STEPS TO TAKE



A free service from the Environment Agency enables you to receive flood alerts and warnings by text, call and/or email. It is important that your information is kept up to date and you should consider registering two or more contact numbers, not just a landline. You can also register a local friend, relative or staff member in case you are away from the property at the time a warning is received. This service provides warnings for the risk of flooding from main rivers and the sea, and not from surface water flooding.

**To sign up visit [www.gov.uk/sign-up-for-flood-warnings](http://www.gov.uk/sign-up-for-flood-warnings) or call on 0345 988 1188**



## FLOOD ALERT

This means that flooding is possible and you need to stay alert and vigilant, making early preparations for a potential flood.

- Monitor the situation through forecasts, local radio stations and monitoring stations.
- Check your flood plan is filled in and your flood kit is complete and ready if needed.



## FLOOD WARNING

This means that flooding to property is expected and immediate action is required to protect yourself and your property.

- Continue to monitor the situation.
- Carry out actions detailed in your flood plan.
- Put any flood resilience equipment into place.



## SEVERE FLOOD WARNING

Flooding is likely to cause significant risk to life and destruction of property.

- Prepare to evacuate and cooperate with the emergency services.
- Get your flood kit before evacuating.
  - Turn off utility supplies.

## GAUGEMAP

[www.gaugemap.co.uk](http://www.gaugemap.co.uk)

This shows data from your local Environment Agency monitoring station which is updated every 15 minutes. Each station also has a Twitter account, helping to keep you regularly informed wherever you are. River levels can also be monitored here:

[www.flood-warning-information.service.gov.uk/river-and-sea-levels](http://www.flood-warning-information.service.gov.uk/river-and-sea-levels)

## MET OFFICE WEATHER WARNINGS

[www.metoffice.gov.uk/  
public/weather/warnings](http://www.metoffice.gov.uk/public/weather/warnings)

Yellow - Be Aware indicates that severe weather and disruption is possible in the next few days.

Amber - Be Prepared highlights increased risk to life and property and that you should be prepared to take action.

Red - Take Action shows that extreme weather is expected and that damage is likely so you should follow safety advice.

